

**Danger!**

# Pedal-Attached Motorized Bicycles



## What's a Motorized Bicycle?

- A bicycle equipped with both pedals and a motor, which can be ridden using by motor alone.
- A bicycle with a driving aid that exceed assist ratio standards.



## Motorized bicycles are classified like motorcycles or cars!

When riding a motorized bicycle, you must obey the same traffic rules as motorcycles and cars, even if you only use it with pedals. These include having a driver's license, not driving on the sidewalk, and wearing a helmet.



## What you need before riding a motorized bicycle



A driver's license for motorcycles or cars



A brake light, rearview mirror, and blinkers.



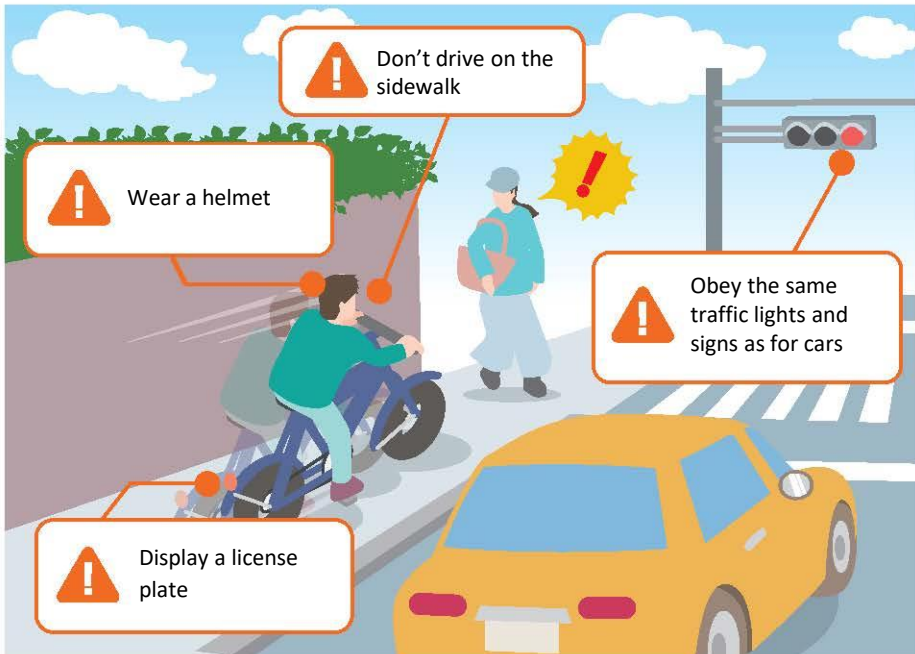
A displayed license plate



A compulsory automobile liability insurance

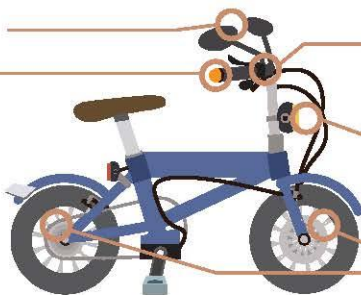


# Ignoring Traffic Laws is Illegal!



Rearview mirror

Blinkers



Horn

Headlight

Brakes

etc.

## Officially Approved Motorized Bicycles

Bicycles with driving aids that are type-approved and bear the TS mark are subject to Bicycle Traffic Rules. If you want to use a motor-assisted bicycle, choose one with a TS mark!



TS Mark



Type-approved bicycle list